

TEST REPORT Job No./Report No TR1346585

Date:29 June 2018

Page 1 of 5

MPS METAL PLASTIK SAN. ÇEMBER VE PAKETLEME SİSTEMLERİ İMALAT VE TİCARET A.Ş.

DILOVASI ORG. SAN. BOLGESİ D 5009 SOK. NO:1 DILOVASI KOCAELI

TEL: 262 648 98 00

FAX: 262 648 98 98

E-MAIL: mkaplan@mpsmetal.com.tr

To the attention of Musa Kaplan

The following sample(s) was /were submitted and identified by/on behalf of the clients as:

Sample Submitted By : MPS METAL PLASTIK SAN. ÇEMBER VE PAKETLEME SİSTEMLERİ İMALAT VE TİCARET A.Ş.
Sample Description : Apex Siyah Boyalı
Article No. : Not Provided
Model No. : APEX
PO / Order No. : Not Provided
Reference No. : Not Provided
Client : Not Provided
End Use : Not Provided
Sample Receiving Date : 26 June 2018
Testing Period : 26 June 2018 ~ 29 June 2018
Service Type : NORMAL
Test Requested : Selected test(s) as requested by client.
Test Method : Please refer to next page(s)
Test Result(s) : Please refer to next page(s)

Conclusion : Based on the performed tests on selected part of submitted samples, the results of Lead, Mercury, Cadmium, Hexavalent chromium comply with the limits as set by Directive (EU) 2015/863 amending Annex II to Directive 2011/65/EU.

"This document is issued by the Company subject to its General Conditions of Service printed overleaf, available on request or accessible at www.sgs.com/terms_and_conditions.htm and, for electronic format documents, subject to Terms and Conditions for Electronic Documents at www.sgs.com/terms_e-document.htm.

Attention is drawn to the limitation of liability, indemnification and jurisdiction issues defined therein. Any holder of this document is advised that information contained hereon reflects the Company's findings at the time of its intervention only and within the limits of Client's instructions, if any. The Company's sole responsibility is to its Client and this document does not exonerate parties to a transaction from exercising all their rights and obligations under the transaction documents. This document cannot be reproduced except in full, without prior written approval of the Company. Any unauthorized alteration, forgery or falsification of the content or appearance of this document is unlawful and offenders may be prosecuted to the fullest extent of the law.

Unless otherwise stated the results shown in this test report refer only to the sample(s) tested and such sample(s) are retained for 30 days only."

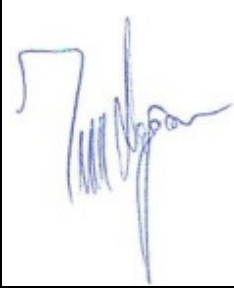
In this Test Report tests marked (1) are included in the IAS Accreditation Scope of this Laboratory. Opinions and interpretations expressed herein are outside the scope of IAS Accreditation.

The test results relate to the tested items only.
Test reports without SGS seal and authorized signatures are invalid.
Reported results do not include uncertainties.

Issued in Istanbul
Signed for and on behalf of
SGS Supervise Gözetme Etüd
Kontrol Servisleri A.Ş.

Tuğrul Doğan
Customer Services Supervisor

Ayşe Gönen
Customer Services Team Leader



"This document is issued by the Company subject to its General Conditions of Service printed overleaf, available on request or accessible at www.sgs.com/terms_and_conditions.htm and, for electronic format documents, subject to Terms and Conditions for Electronic Documents at www.sgs.com/terms_e-document.htm.

Attention is drawn to the limitation of liability, indemnification and jurisdiction issues defined therein. Any holder of this document is advised that information contained hereon reflects the Company's findings at the time of its intervention only and within the limits of Client's instructions, if any. The Company's sole responsibility is to its Client and this document does not exonerate parties to a transaction from exercising all their rights and obligations under the transaction documents. This document cannot be reproduced except in full, without prior written approval of the Company. Any unauthorized alteration, forgery or falsification of the content or appearance of this document is unlawful and offenders may be prosecuted to the fullest extent of the law.

Unless otherwise stated the results shown in this test report refer only to the sample(s) tested and such sample(s) are retained for 30 days only."

In this Test Report tests marked (1) are included in the IAS Accreditation Scope of this Laboratory. Opinions and interpretations expressed herein are outside the scope of IAS Accreditation.

Test Part Description :

No.1: Black metal product

"This document is issued by the Company subject to its General Conditions of Service printed overleaf, available on request or accessible at www.sgs.com/terms_and_conditions.htm and, for electronic format documents, subject to Terms and Conditions for Electronic Documents at www.sgs.com/terms_e-document.htm.

Attention is drawn to the limitation of liability, indemnification and jurisdiction issues defined therein. Any holder of this document is advised that information contained hereon reflects the Company's findings at the time of its intervention only and within the limits of Client's instructions, if any. The Company's sole responsibility is to its Client and this document does not exonerate parties to a transaction from exercising all their rights and obligations under the transaction documents. This document cannot be reproduced except in full, without prior written approval of the Company. Any unauthorized alteration, forgery or falsification of the content or appearance of this document is unlawful and offenders may be prosecuted to the fullest extent of the law.

Unless otherwise stated the results shown in this test report refer only to the sample(s) tested and such sample(s) are retained for 30 days only."

In this Test Report tests marked (1) are included in the IAS Accreditation Scope of this Laboratory. Opinions and interpretations expressed herein are outside the scope of IAS Accreditation.

Heavy Metals (ROHS)¹

Test Method:

- 1) With reference to IEC 62321-5:2013, determination of Cadmium by ICP-OES.
- 2) With reference to IEC 62321-5:2013, determination of Lead by ICP-OES.
- 3) With reference to IEC 62321-4:2013+A1:2017, determination of Mercury by ICP-OES.
- 4) With reference to IEC 62321-7-1:2015, determination of Hexavalent Chromium by Colorimetric Method using UV-Vis.

Test Item(s):	Unit	Results	MDL	Limit
		1		
Cadmium (Cd)	mg/kg	n.d.	2	100
Lead (Pb)	mg/kg	27 mg/kg	2	1000
Mercury (Hg)	mg/kg	n.d.	2	1000
Hexavalent Chromium (CrVI)	µg/cm ²	n.d.	0.10	#

(a) mg/kg = ppm ; 0.1wt % = 1000 ppm

(b) n.d. = Not Detected

(c) MDL = Method Detection Limit

(d) # = a. The sample is positive for CrVI if the CrVI concentration is greater than 0.13 µg/cm². The sample coating is considered to contain CrVI

b. The sample is negative for CrVI if CrVI is n.d. (concentration less than 0.10 µg/cm²). The coating is considered a non-CrVI based coating

c. The result between 0.10 µg/cm² and 0.13 µg/cm² is considered to be inconclusive - unavoidable coating variations may influence the determination

Information on storage conditions and production date of the tested sample is unavailable and thus results of Cr(VI) represent status of the sample at the time of testing represent status of the sample at the time of testing

(e) - = not regulated

The maximum permissible limit is quoted from RoHS Directive (EU) 2015/863.

IEC 62321 series is equivalent to EN 62321 series

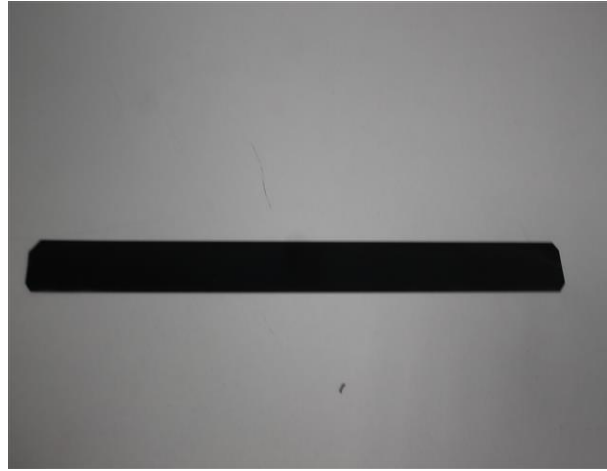
http://www.cenelec.eu/dyn/www/f?p=104:30:1742232870351101:::FSP_ORG_ID,FSP_LANG_ID:1258637,25

"This document is issued by the Company subject to its General Conditions of Service printed overleaf, available on request or accessible at www.sgs.com/terms_and_conditions.htm and, for electronic format documents, subject to Terms and Conditions for Electronic Documents at www.sgs.com/terms_e-document.htm.

Attention is drawn to the limitation of liability, indemnification and jurisdiction issues defined therein. Any holder of this document is advised that information contained hereon reflects the Company's findings at the time of its intervention only and within the limits of Client's instructions, if any. The Company's sole responsibility is to its Client and this document does not exonerate parties to a transaction from exercising all their rights and obligations under the transaction documents. This document cannot be reproduced except in full, without prior written approval of the Company. Any unauthorized alteration, forgery or falsification of the content or appearance of this document is unlawful and offenders may be prosecuted to the fullest extent of the law.

Unless otherwise stated the results shown in this test report refer only to the sample(s) tested and such sample(s) are retained for 30 days only."

In this Test Report tests marked (1) are included in the IAS Accreditation Scope of this Laboratory. Opinions and interpretations expressed herein are outside the scope of IAS Accreditation.

1346585

* * * End of Test Report * * *

"This document is issued by the Company subject to its General Conditions of Service printed overleaf, available on request or accessible at www.sgs.com/terms_and_conditions.htm and, for electronic format documents, subject to Terms and Conditions for Electronic Documents at www.sgs.com/terms_e-document.htm.

Attention is drawn to the limitation of liability, indemnification and jurisdiction issues defined therein. Any holder of this document is advised that information contained hereon reflects the Company's findings at the time of its intervention only and within the limits of Client's instructions, if any. The Company's sole responsibility is to its Client and this document does not exonerate parties to a transaction from exercising all their rights and obligations under the transaction documents. This document cannot be reproduced except in full, without prior written approval of the Company. Any unauthorized alteration, forgery or falsification of the content or appearance of this document is unlawful and offenders may be prosecuted to the fullest extent of the law.

Unless otherwise stated the results shown in this test report refer only to the sample(s) tested and such sample(s) are retained for 30 days only."

In this Test Report tests marked (1) are included in the IAS Accreditation Scope of this Laboratory. Opinions and interpretations expressed herein are outside the scope of IAS Accreditation.